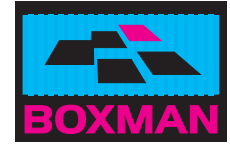


Code: 12G1

3m (10ft) long container



Instant storage space

Has your business or facility run out of space, are you overstocked, undergoing a refit, or shifting premises?

Do you need to shift stock to point of sale?

Are you running or attending an event you need to move product or equipment to?

A Boxman container is the perfect solution for your short or long term storage.

The benefits:

- Instant, flexible storage options
- Prompt delivery and pick-up
- Cost effective
- Safe, dry and vermin proof
- Lockable and tamper proof
- Durable steel construction



www.boxman.co.nz

About this container

For the client requiring half the storage volume of a standard container, here is the solution. At 15.9m³ this container is still capable of being shipped and railed as it is manufactured to an ISO standard for transportation. Two ten foot units end on end are the same as a 6.1m (20ft) long container for trucking purposes.

Boxman containers

This container has been specifically designed and manufactured according to Boxman Group specifications to meet our customer's high expectations. These containers are maintained to a 'Food Grade' quality standard, ensuring the best possible equipment is available at all times.

Container features

New build Boxman containers are built to the highest industry specification. They all feature high strength, corrosion resistant steel and additional vents to prevent condensation. Polyurethane coated floors for easy cleaning and security lock-boxes are standard.

All Boxman containers are CSC plated to allow for coastal and international shipping.



Our customer service team are standing by to assist with your enquiry: Freephone 0800 BOXMAN (269 626)

Code: 12G1

3m (10ft) long container



Container dimensions

External Length	2991mm
External Width	2438mm
External Height	2591mm
Interior Length	2831mm
Interior Width	2350mm
Interior Height	2390mm
Door Width	2338mm
Door Height	2280mm

Cubic Volume	15.9m ³
Gross Weight	10160kg
Tare Weight	1200kg
Payload	8960kg

Note: Specifications provided are indicative only as they can differ slightly between manufacturers.

General information

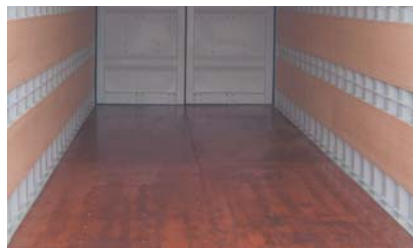
ISO Code	12G1
Subtype	
Shipping Grade	IICL5
Internal Grade	Food Grade

Boxman's new build container features



1. Lock-box

The security lock-box features a covered tab to which a padlock can be fixed. The solid construction will deter even the most determined of thieves.



2. Varnished floor

Most Boxman containers feature a coated polyurethane floor. This reduces maintenance and cleaning costs.



3. Extra Ventilation

All Boxman new build containers are fitted with a minimum of four vents to reduce the risk of condensation and sweating.



4. Higher handles

All Boxman new build containers feature higher handles. This is a great feature that will save your back, and make it much easier to get the leverage you need to open up your container.



BOXMAN

- Nationwide delivery service
- Flexible self-storage options
- Customer service and support unrivalled in the business
- Nelson Head Office, branches in Auckland, Blenheim, Canterbury and Wellington.



www.boxman.co.nz

Our customer service team are standing by to assist with your enquiry: Freephone 0800 BOXMAN (269 626)